

THERETHERE

COMPANY

Technical rider – Carrying my Father

This technical rider is an integral part of the contract. Adjustments can be made if required due to specific features of the venue but only in negotiation with the company.

General

Duration: 55 minutes

Performers: 8

Artistic director: 1

Technicians from the company: 1

Technicians from theatre, provided by the organiser: 2

Audience capacity: Max 200 – Seating provided by organiser

Arrival crew: at least 8 hours before showtime

Contact

There There Company: Toon Van Gramberen +32 485 13 16 73
Hanna Mampuys +32 484 973841
Technical Casper Van Overschee +32 478 734919

Technical general

black dance carpet: rolled out and taped before arrival of our crew
scene: Black-box / theatre conditions
surface: 10m width – 8m depth
opening scene: minimum 10 meters
width scene: minimum 14 meters
depth scene: Minimum 8 meters
height scene: Minimum 7 meters
Space: heated space

Light

hight of lights: 7 meters
we provide: 2 x Softbox + switchpack
1 x Beamer
1 X HDMI extender set
2 x hdmi kabel
1 x S/FTP-kabel CAT6 - 50 meter
1 x panel for subtitles
pc with chamsys interface brought by THERE THERE company

The theatre provides: full theatre conditions
if you have a chamsys table we will use this
5pins DMX connection needed between dimmers en technical
direction.
floor lights: we use floor lights on four ladders (theatre light ladders)

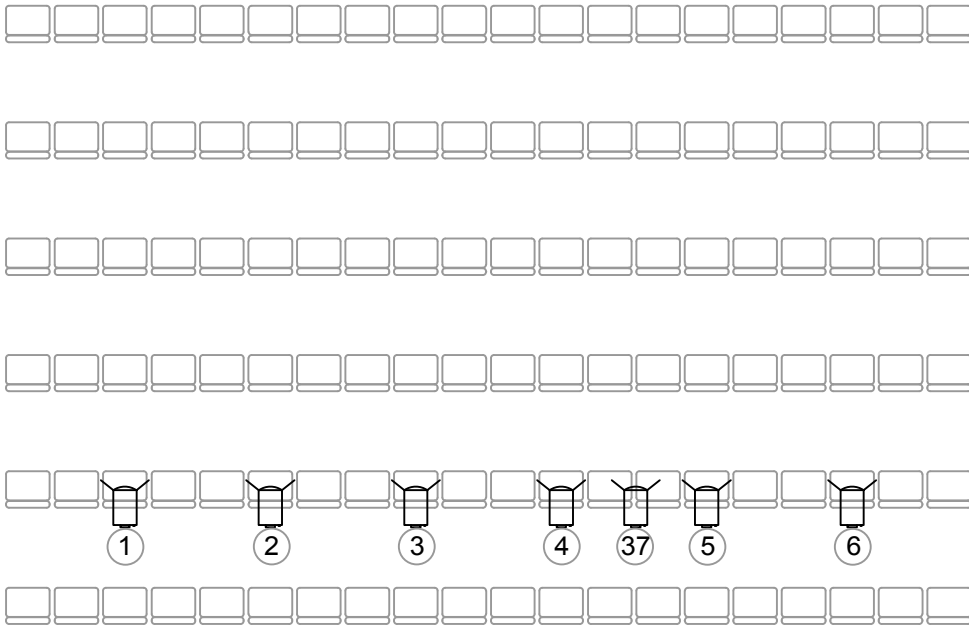
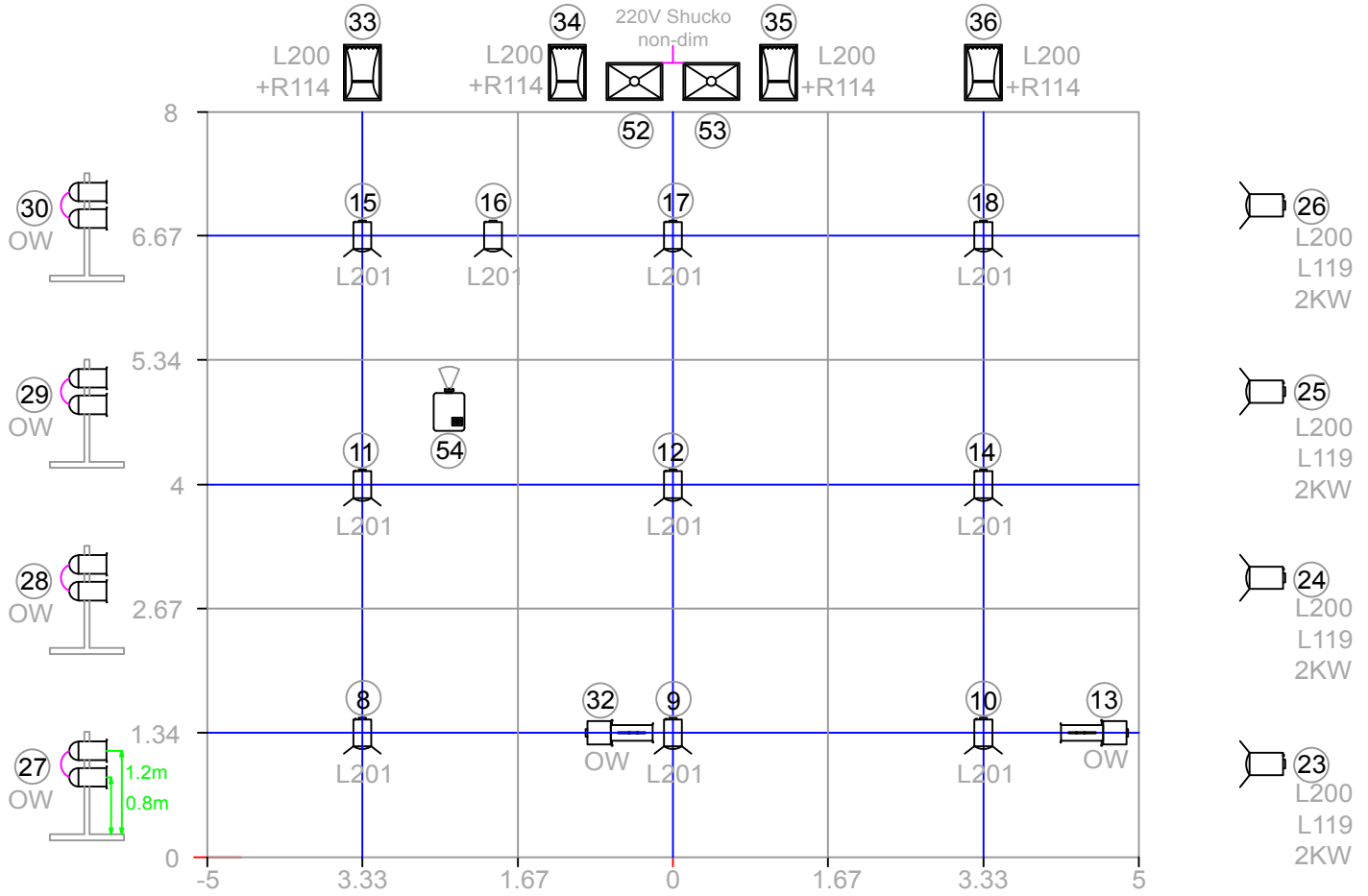
Sound

The company provides: PC

Theatre provides:

- 2 speakers with appropriate amplification
- 3 monitors
- DI's
- A quality-mixing console

Paneel boventiteling



Zaallicht headnrs: 91-95

There there Company "CMF"

	Beamer Therethere
	ACP
	Softbox 220V
	Par 64 CP62
	Profil 1 Kw
	PC 1 Kw
	PC 2 Kw